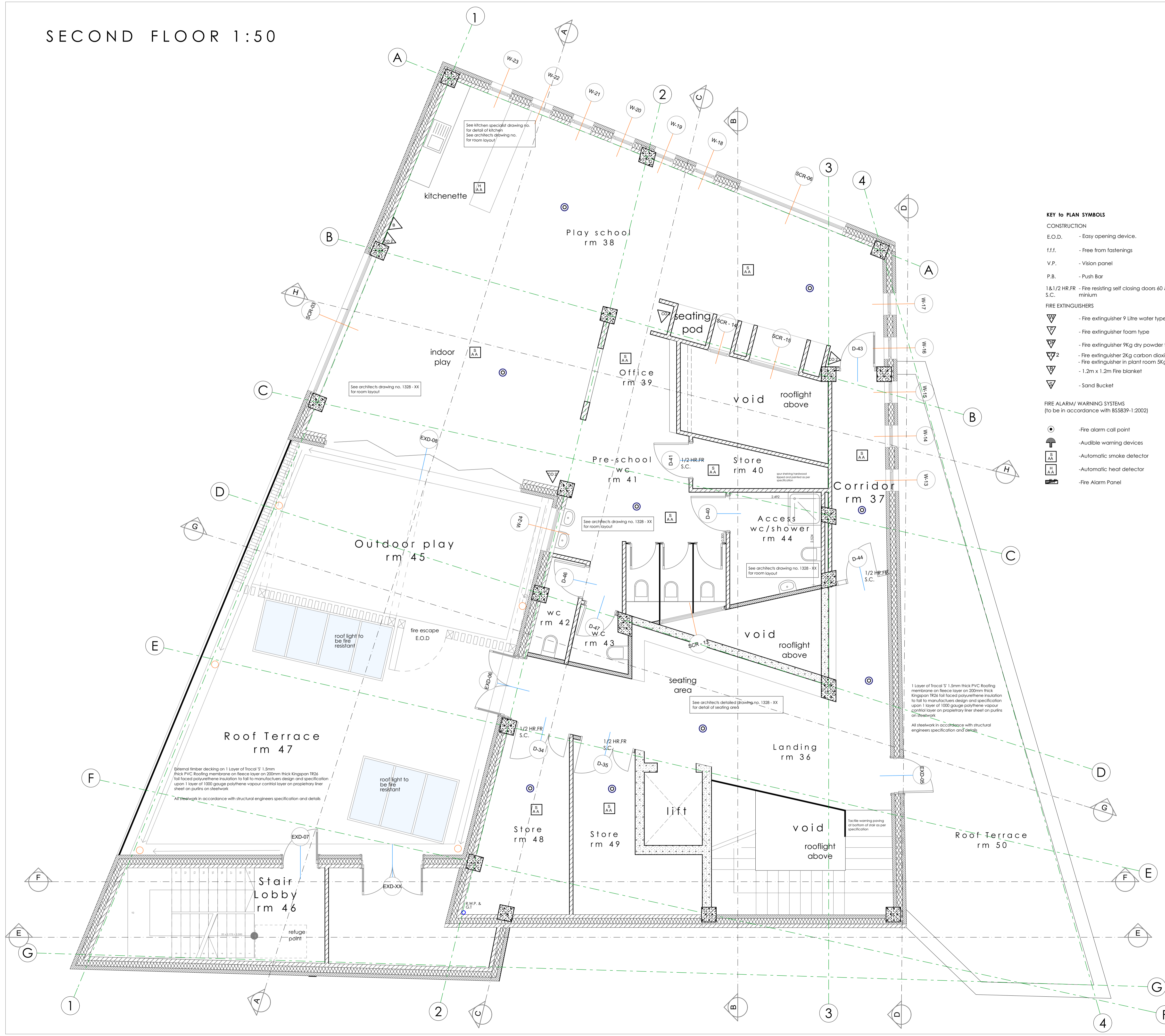


SECOND FLOOR 1:50



KEY TO PLAN SYMBOLS

CONSTRUCTION

- E.O.D. - Easy opening device.
 - f.f.f. - Free from fastenings
 - V.P. - Vision panel
 - P.B. - Push Bar
 - 1 & 1/2 HR.FR - Fire resisting self closing doors 60 & 30 mins. minimum
 - S.C. -
- FIRE EXTINGUISHERS**
- ▽ - Fire extinguisher 9 Litre water type
 - ▽ - Fire extinguisher foam type
 - ▽2 - Fire extinguisher 9Kg dry powder type
 - ▽2 - Fire extinguisher 2Kg carbon dioxide type
 - ▽ - Fire extinguisher in plant room 5Kg Carbon dioxide
 - ▽ - 1.2m x 1.2m Fire blanket
 - ▽ - Sand Bucket

FIRE ALARM/ WARNING SYSTEMS
(to be in accordance with BS5839-1:2002)

- - Fire alarm call point
- ⬆ - Audible warning devices
- ⊞ - Automatic smoke detector
- ⊞ - Automatic heat detector
- ⊞ - Fire Alarm Panel

NOTICES

- ⊞ - General fire notice
- ⊞ - Staff fire notice
- ⊞ - Guest fire notice
- ⊞ - "fire escape - keep clear" notice
- ⊞ - "push bar to open" notice
- ⊞ - "fire door - keep shut" notice

EMERGENCY LIGHTING (in accordance with BS 5266-1: 2005 and EXIT signs as BS 5499 Part 1: 2002)

- ⊞ - Emergency lighting points
 - ⊞ - illuminated exit boxes
 - ⊞ - illuminated exit boxes with direct/arrow
- Dashed line denote position of 1/2 hr. fr. smoke curtain over linked to fire alarm. Smoke curtain in channel as per fire report.

1 Layer of Trical 'S' 1.5mm thick PVC Roofing membrane on Resek layer on 200mm thick Kingspan TR26 foil faced polyurethane insulation to fall to manufacturers design and specification upon 1 layer of 1000 gauge polythene vapour control layer on proprietary liner sheet on purlins on steelwork.

All steelwork in accordance with structural engineers specification and details.

External timber decking on 1 Layer of Trical 'S' 1.5mm thick PVC Roofing membrane on Resek layer on 200mm thick Kingspan TR26 foil faced polyurethane insulation to fall to manufacturers design and specification upon 1 layer of 1000 gauge polythene vapour control layer on proprietary liner sheet on purlins on steelwork.

All steelwork in accordance with structural engineers specification and details.

TENDER ISSUE

revision	description		
project	Culture Centre for Armagh		
client	Aonach Mhór		
architects	da architects ltd		
title	Proposed Second Floor		
scale	1:50	date	14-12-15
drawn	SC	checked	SN
drawing no.	1328- 52		
a. Unit 6, Armagh Business Park Hamiltonsbawn Road Armagh, Co. Armagh, BT60 1HW o. Unit 11a, Port of Larne Business Park Redlands Road, Larne, BT40 1AX t. 02837 522271 f. 02837 517590 e. sarah@daarchitectsLtd.com w. www.daarchitectsLtd.com			
No part of this document may be reproduced or transmitted in any form or stored in any retrieval system of any nature without the written permission of da architects ltd. as copyright holder except as agreed for use on the project for which the document was originally issued.			

DRAFT